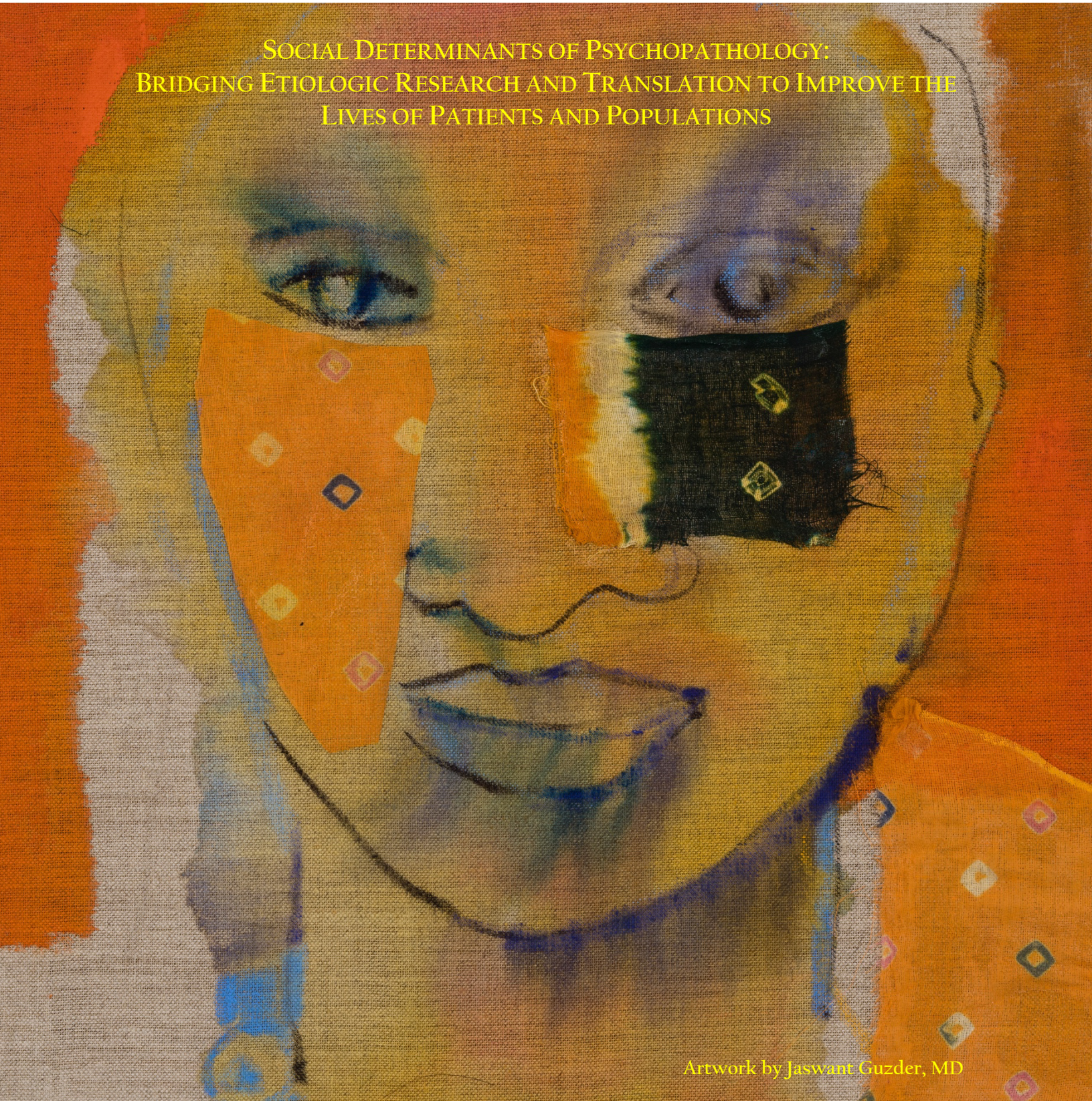


115TH ANNUAL MEETING OF THE
AMERICAN PSYCHOPATHOLOGICAL ASSOCIATION
MARCH 6-8, 2025, HILTON BOSTON PARK PLAZA

SOCIAL DETERMINANTS OF PSYCHOPATHOLOGY:
BRIDGING ETIOLOGIC RESEARCH AND TRANSLATION TO IMPROVE THE
LIVES OF PATIENTS AND POPULATIONS



Artwork by Jaswant Guzder, MD

APPA

AMERICAN PSYCHOPATHOLOGICAL ASSOCIATION

EST. 1910

APPA Council

President

Stephen E. Gilman*

*Eunice Kennedy Shriver National
Institute of Child Health and
Development*

**Dr. Gilman is serving in his
personal capacity*

President-Elect

Maria Kovacs

University of Pittsburgh

Vice President

James Anthony

Michigan State University

Membership Chair

Anna Van Meter

NYU School of Medicine

Secretary

William S. Stone

Harvard Medical School

Treasurer

Susan L. Santangelo

Maine Health Institute for Research

Councilors

**Roberto Lewis-
Fernández**

(Immediate Past President)

Columbia/NYS Psychiatric Institute

Cristiane Duarte

Columbia University

Alison Merikangas

*Children's Hospital of Philadelphia
Research Institute*

William E. Narrow

(Secretary Elect)

Johns Hopkins Medicine

Helen Wilson

Stanford University

Executive Director

Suzanne S. Bevan

sbevan@appassn.org

Committees

Program Committee

Alison Merikangas

Guilherme Borges

Helen Wilson

Jacob Appel

Joshua Breslau

Luke Grovenor

Maria Kovacs, Co-Chair

Neil Aggarwal

Oscar Jimenez-Solomon

Roberto Lewis-Fernández

Ruth McKenzie

Stephen E. Gilman, Chair

Susan Santangelo

William Stone

Diversity, Equity,

Inclusion, Accessibility

& Belonging Committee

Anna Van Meter, Co-Chair

Cristiane Duarte, Co-Chair

Claudia Lugo

Tim Michaels

Lillian Polanco-Roman

Oscar Jimenez-Solomon

Ana Florence

Helen Wilson

Membership Committee

Anna Van Meter, Chair

Abstract Reviewers

Alison Merikangas

Emma Stapp

Guilherme Borges

Henri Garrison-Desany

Ingrid Pamela Morales

Cedillo

Jacob M. Appel

Katherine McGuire

Katrina Rodriguez

Kevin Conway

Laura Havers

Lawrence Maayan

Mete Ercis

Monica Uddin

Paulo Lizano

Prudence Fisher

Rodrigo Garcia-Cerde

Seon-Cheol Park

Susan Santangelo

Theresa Faller

William Narrow

Xihan Yang

Donors

The APPA gratefully acknowledges the generous contributions of the following members in support of the Association

Cristiane Duarte
Döst Öngur
Helen Wilson
James Potash
Jim and SB Anthony
Maria Kovacs
Michael Lyons
Nehal Vadhan
Patrick Shrout
Roberto Lewis-Fernández
Stephen Gilman
Susan Santangelo
William Narrow
William Stone

APPA 2025 Awardees

David Williams (Zubin Award)
Jaimie Gradus (Breslau and Murphy Award)
John Pamplin (Robins and Guze Award)
Stephen Gilman (Hamilton Award)
Theresa Betancourt, (Hoch)

Artful Acknowledgment

APPA extends a special appreciation to Dr. Jaswant Guzder for the use of her artwork in our conference materials

Travel award recipients

Alana Brixner Nunes
Barry Bryant
Diego A Diaz-Faes
Emma McCoy
Emma Stapp
Flora Blangis
Gabriel Conrado Quintero Garzola
Joya Bhattacharyya
Lara Khalifeh
Laura Havers
Michelle Flesaker
Naoise Mac Giollabhui
Nyabang Buom
Pat Precin
Peter Adu
Priscila Dib Goncalves
Rachel Slimovitch
Sarah McKetta
Stephanie Rolin
Tahlya Holness
Tenzin Yangchen
Vijaya Seegulam
Xinyi Shi

FUNDING

THIS ANNUAL MEETING OF THE APPA HAS RECEIVED PARTIAL SUPPORT FROM THE NATIONAL INSTITUTE OF MENTAL HEALTH (NIMH) AND THE NATIONAL INSTITUTE ON DRUG ABUSE (NIDA) THROUGH GRANT R13MH136663.

THE PRE-CONFERENCE TRAINEE WORKSHOP IS SUPPORTED IN PART BY A SPECIAL PROJECT AWARD FROM THE SOCIETY OF BIOLOGICAL PSYCHIATRY. THE APPA IS GRATEFUL TO THE SOBP FOR RECOGNIZING THE SIGNIFICANT OVERLAP IN THE MISSIONS OF THE TWO SOCIETIES AND FOR THEIR PARTNERSHIP OVER SEVERAL YEARS.

THE PRE-CONFERENCE TRAINEE WORKSHOP IS SUPPORTED IN PART BY THE HARVARD POPULATION MENTAL HEALTH LAB AND BROAD TRAUMA INITIATIVE.

SCIENTIFIC PROGRAM

Social Determinants of Psychopathology: Bridging Etiologic Research and Translation to Improve the Lives of Patients and Populations

The social causes of psychopathology have been recognized nearly as long as psychopathology itself. Advances in research on the social determinants of psychopathology have enabled us to understand the causal role of social factors in mental health. For nearly all aspects of the mechanistic underpinnings of psychopathology, we are enjoying a greater understanding of how social factors influence mental health. Social factors become embodied through genomic processes, become encoded in the developing brain, and have enduring influences on neurocognitive development in childhood and cognitive decline later in life. Social factors moderate treatment response and treatment outcomes for many psychiatric conditions. And social factors fundamentally shape the ability to seek and receive mental health care. Unfortunately, the tremendous gains in understanding how social factors cause and sustain psychiatric illness have not yet led to comparable gains in preventing psychiatric illness and in reducing disparities in psychiatric illness nor have they led to comparable gains in the effectiveness of psychiatric care. This APPA conference brings together leading scholars on the social determinants of psychopathology from a spectrum of mental health disciplines: epidemiology, anthropology, sociology, genomics, neuroscience, biostatistics, psychiatry, psychology, and health policy. Their presentations will help to integrate our current understanding of the diverse pathways from social factors to mental illness and what stands in the way of this understanding being fully utilized to improve the lives of patients and populations.

Stephen E. Gilman, ScD, APPA President, 2025

WEDNESDAY, MARCH 5

5:00 – 6:00pm **REGISTRATION OPENS**

THURSDAY, MARCH 6

7:30 – 9:00am **REGISTRATION AND CONTINENTAL BREAKFAST**

7:45 – 8:25am **Mentor-Mentee Meetup and Speed Networking (pre-registration in mentorship program required) (Franklin Room)**

8:30 – 8:45am **WELCOMING REMARKS**
Stephen E. Gilman, ScD, APPA President

Session 1, Keynote Presentations: Acting on the Social Determinants of Health and Mental Health Through Community, Clinical, and Policy Interventions

Chair: Stephen E. Gilman, ScD, APPA President

8:45 – 9:15am **WHAT SHOULD BE THE FOCUS IN SOCIAL DETERMINANTS GIVEN UNCERTAIN TIMES**
Margarita Alegría, PhD, *Harvard Medical School and Massachusetts General Hospital*

9:15 – 9:45am	SOCIAL POLICY'S POTENTIAL TO IMPROVE HEALTH AND MENTAL HEALTH Dolores Acevedo-Garcia, PhD, MPA-URP, <i>Boston University School of Social Work</i>
9:45 – 10:00am	GENERAL DISCUSSION Session 2: Bridging APPA 2024 and 2025, and bridging etiologic and intervention research. How can we identify intervention targets from observational data? Chair: Roberto Lewis-Fernández, MD, <i>Columbia University</i> and <i>NYSPI</i> , APPA Immediate Past-President
10:00 – 10:25am	SOCIAL DETERMINANTS OF MENTAL ILLNESS: THE PROMISE AND PERILS OF A LIFE COURSE APPROACH Stephen E. Gilman, ScD, <i>Eunice Kennedy Shriver National Institute of Child Health and Human Development</i> (Hamilton Lecture)
10:25 – 10:50am	QUANTIFICATION OF BIOLOGICAL AGING Daniel Belsky, PhD, <i>Robert N Butler Columbia Aging Center, Columbia University</i>
10:50 – 11:20am	BREAK
11:20 – 11:45am	IDENTIFYING EFFECTIVE AND EQUITABLE POLICY INTERVENTIONS FOR THE OVERDOSE CRISIS John R. Pamplin II, PhD, MPH, <i>Columbia University Mailman School of Public Health</i> (Robins and Guze Award Lecture)
11:45 – 12:10pm	SOME APPROACHES TO EVIDENCE TRIANGULATION IN DEMENTIA RESEARCH M. Maria Glymour, ScD, <i>Boston University School of Public Health</i>
12:10 – 12:30pm	GENERAL DISCUSSION
12:30 – 2:00pm	LUNCH Session 3: Addressing the social determinants of mental health through social and economic policies Chair: Oscar Jiménez-Solomon, PhD, MPH, <i>Columbia University/NYS Psychiatric Institute</i>
2:00 – 2:25pm	EVIDENCE ON US POVERTY ALLEVIATION POLICY AND MENTAL HEALTH Rita Hamad, MD, PhD, <i>Harvard TH Chan School of Public Health</i>
2:25 – 2:50pm	CHILD SEXUAL ABUSE IS PREVENTABLE, NOT INEVITABLE Elizabeth Letourneau, PhD, <i>Johns Hopkins Bloomberg School of Public Health</i>
2:50 – 3:15pm	IMPACT OF SOCIAL AND ECONOMIC POLICIES ON FIREARM-RELATED HARM Ali Rowhani-Rahbar, MD, MPH, PhD, <i>University of Washington School of Public Health & University of Washington School of Medicine</i>

3:15 – 3:40pm	STATE POLICY AND SUICIDAL BEHAVIOR AMONG SEXUAL AND GENDER MINORITY COLLEGE STUDENTS* Michelle Flesaker, BA, <i>Boston University School of Public Health</i>
3:40 – 4:00pm	GENERAL DISCUSSION
4:00 – 4:30pm	BREAK
	Session 4: Socio-structural determinants of mental health Chair: Joshua Breslau, ScD, PhD
4:30 – 4:50pm	LONGITUDINAL CHANGES IN FUNCTIONAL DIFFICULTIES AND SUICIDALITY PRE- VERSUS POST-COVID-19 PANDEMIC: EVIDENCE FROM A POPULATION-BASED SAMPLE OF CANADIAN CHILDREN, YOUTH AND YOUNG ADULTS* Katholiki Georgiades, PhD, <i>McMaster University</i>
4:50 – 5:10pm	YOUTH ADVERSITY AND ADOLESCENT MENTAL HEALTH: THE ROLE OF PARENTAL AND PEER SUPPORT AT THE INTERSECTION OF GENDER, SOCIO-ECONOMIC BACKGROUND, AND ETHNICITY* Laura Havers, PhD, <i>Queen Mary, University of London</i>
5:10 – 5:30pm	SCHOOL RACIAL/ETHNIC DIVERSITY AND PEER VICTIMIZATION AMONG US ELEMENTARY STUDENTS: DIVERSITY MEASURES MATTER* Seetha Davis, BA, <i>Harvard TH Chan School of Public Health</i>
5:30 – 5:45pm	GENERAL DISCUSSION
6:00 – 7:30pm	Poster Session

FRIDAY, MARCH 7, 2025

7:30 – 9:00am	REGISTRATION AND CONTINENTAL BREAKFAST
8:00 – 8:50am	Early-Career Roundtable (Franklin Room)
9:00 – 10:30am	Session 5: Award Ceremony and the State of APPA Chairs: Cristiane Duarte, PhD, APPA Councilor, and Stephen Gilman, ScD, APPA President
10:30 – 11:10am	Session 6: Keynote Presentation RACE/ETHNICITY, STRESS AND MENTAL HEALTH: AND WHAT WE CAN DO ABOUT IT David Williams, PhD, MPH, <i>Harvard University</i> (Zubin Lecture) Chair: John Pamplin, PhD
11:10 – 11:30am	BREAK
	Session 7: Qualitative approaches to addressing the social determinants of mental health Chair: Anne Becker, MD, PhD

11:30 – 11:50am	MEETING LATINÉ ADULTS WHERE THEY'RE AT TO ADDRESS MENTAL WELLBEING: A SOCIAL DETERMINANTS OF HEALTH APPROACH* Alice P. Villatoro, PhD, <i>Santa Clara University</i>
11:50 – 12:10pm	PERCEIVED SOCIAL (DIS)CONNECTEDNESS AND SUICIDE IDEATION AND ATTEMPTS AMONG ADOLESCENTS: A QUALITATIVE ANALYSIS* Felix Yirdong, MA, <i>The Graduate Center, City University of New York</i>
12:10 – 12:30pm	FAMILIAL FIREARM CULTURE AMONG THE FAMILIES OF YOUTH WHO DIED BY FIREARM-SUICIDE: A PSYCHOLOGICAL AUTOPSY STUDY* Matthew Kelly, PhD, MPH, <i>Johns Hopkins University School of Medicine</i>
12:30 – 12:45pm	GENERAL DISCUSSION
12:45 – 2:15pm	LUNCH Session 8: Community and clinical interventions approaches to the social determinants of mental health Chair: Helen Wilson, PhD, <i>Stanford University</i>
2:15 – 2:40pm	MATERNAL MENTAL HEALTH: ENHANCING THE PERINATAL CARE ECOSYSTEM FOR 2GEN IMPACT Catherine Monk, PhD, <i>Columbia University Vagelos College of Physicians and Surgeons</i>
2:40 – 3:05pm	CHARACTERIZING SUICIDE LOSS SURVIVORSHIP: IMPLICATIONS FOR HEALTH AND POSTVENTION Jaimie Gradus, PhD, <i>Boston University School of Public Health</i> (Breslau and Murphy Lecture)
3:05 – 3:30pm	A NOVEL APPROACH FOR IDENTIFYING INTERVENTION TARGETS: EVIDENCE FROM A LONGITUDINAL STUDY OF WAR-AFFECTED FAMILIES IN SIERRA LEONE* Candace J. Black, PhD, <i>Boston College</i>
3:30 – 4:00pm	BREAK
4:00 – 4:25pm	DISASTER-RELATED HOME LOSS, MENTAL HEALTH, AND RISK OF COGNITIVE DECLINE: CAUSAL MEDIATION ANALYSIS USING A NATURAL EXPERIMENT DATA* Sakurako Okuzono, MPH, <i>Harvard TH Chan School of Public Health</i>
4:25 – 4:50pm	MENTAL ILLNESS PREVENTION, SOCIAL DRIVERS OF HEALTH AND PERSPECTIVES OF THE UNITED STATES PREVENTIVE SERVICES TASK FORCE Michael Silverstein, MD, <i>Brown University</i>
4:50 – 5:30pm	GENERAL DISCUSSION
6:00 – 7:30pm	President's Reception (Avenue 34) All Attendees Invited

SATURDAY, MARCH 8, 2025

7:30 – 9:00am	REGISTRATION AND CONTINENTAL BREAKFAST
8:30 – 9:15am	Panel discussion on the resilience of science Brittany Charlton, ScD, <i>Harvard Medical School and Harvard Pilgrim Health Care Institute</i> ; Yvette C. Cozier, DSc, <i>Boston University School of Public Health</i> ; Helen Wilson, PhD, <i>Stanford University</i> (APPA Councilor) Chair: Cristiane Duarte, PhD, <i>Columbia University</i> (APPA Councilor)
9:20 – 10:00am	Session 9: Keynote presentation POVERTY AND COMMON MENTAL HEALTH CONDITIONS-MECHANISMS AND INTERVENTIONS Vikram Patel, MD, <i>Harvard Medical School and Harvard TH Chan School of Public Health</i> Chair: Jaimie Gradus, PhD, <i>Boston University School of Public Health</i>
10:00 – 10:20am	BREAK Session 10: World Psychiatric Association Section on Epidemiology and Public Health session on social determinants and global mental health Chair: Katherine Keyes, PhD, <i>Columbia University</i>
10:20 – 10:45am	PROMOTING THE MENTAL HEALTH OF CHILDREN, YOUTH AND FAMILIES FACING ADVERSITY: PERSPECTIVES FROM POST-CONFLICT SUB-SAHARAN AFRICA TO FAMILIES RESETTLING IN THE U.S. Theresa Betancourt, ScD, <i>Boston College School of Social Work</i> (Hoch Lecture)
10:45 – 11:10am	THE SOCIAL CORRELATES OF TRAUMA AND PTSD ACROSS VARYING GEOGRAPHIES: IMPORTANCE OF CONTEXT Lukoye Atwoli, MD, <i>Medical College East Africa and Aga Khan University</i>
11:10 – 11:35am	UNDERSTANDING THE HETEROGENEITY OF TREATMENT EFFECTS OF DIGITAL MENTAL HEALTH INTERVENTIONS FOR UNIVERSITY STUDENTS IN COLOMBIA AND MEXICO Corina Benjet, PhD, <i>Instituto Nacional de Psiquiatría Ramón de la Fuente Muñiz, Mexico City, Mexico</i>
11:35 – 12:00pm	INTERPERSONAL CONFLICTS, SOCIAL MEDIA USE, AND DEPRESSION Michael Y. Ni, MD, <i>School of Public Health, University of Hong Kong</i>
12:00 – 12:25pm	GENERAL DISCUSSION
12:25 – 12:30pm	Closing remarks and transfer of the APPA Presidency to Dr. Maria Kovacs; annual meeting adjournment

*Submitted Presentation